



Rowlands Road, Worthing

Per Month
£1,200 Per Month

- One Bedroom Flat
- Split Level
- South Facing Patio
- Available Now
- Council Tax Band - B
- EPC Rating - C
- Fantastic Location
- Tasteful Fixtures and Fittings
- LARGE BASEMENT STORAGE AREA

Situated in the heart of Worthing, this spacious one-bedroom split-level flat offers a perfect blend of character and modern living. The property features a large open-plan lounge/kitchen, ideal for entertaining, and a charming master bedroom with plenty of character.

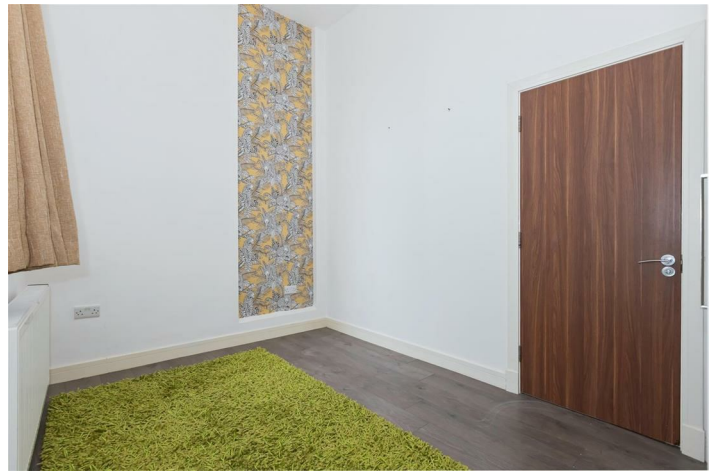
A south-facing terrace provides a bright and private outdoor space to enjoy the sun. Located on Rowlands Road, the flat is just a short walk from the seafront, shops, and cafés, making it an excellent choice for those seeking coastal living with convenience.

LARGE BASEMENT STORAGE AREA

Available Now

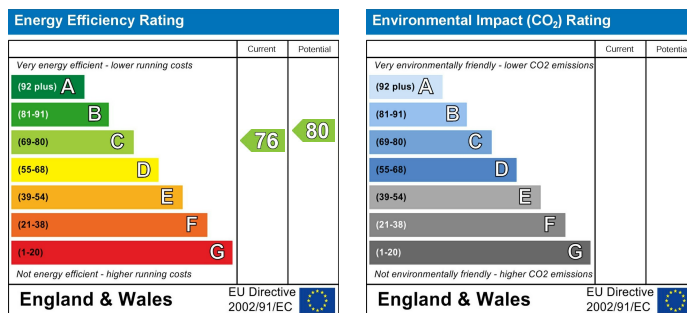
T: 01903 331247 E: info@robertluff.co.uk
www.robertluff.co.uk

Robert
Luff & Co
Sales | Lettings | Commercial



Accommodation





The information provided about this property does not constitute or form any part of an offer or contract, nor may it be regarded as representations. All interested parties must verify accuracy and your solicitor must verify tenure/lease information, fixtures and fittings and, where the property has been extended/converted, planning/building regulation consents. All dimensions are approximate and quoted for guidance only as are floor plans which are not to scale and their accuracy cannot be confirmed. References to appliances and/or services does not imply that they are necessarily in working order or fit for the purpose.